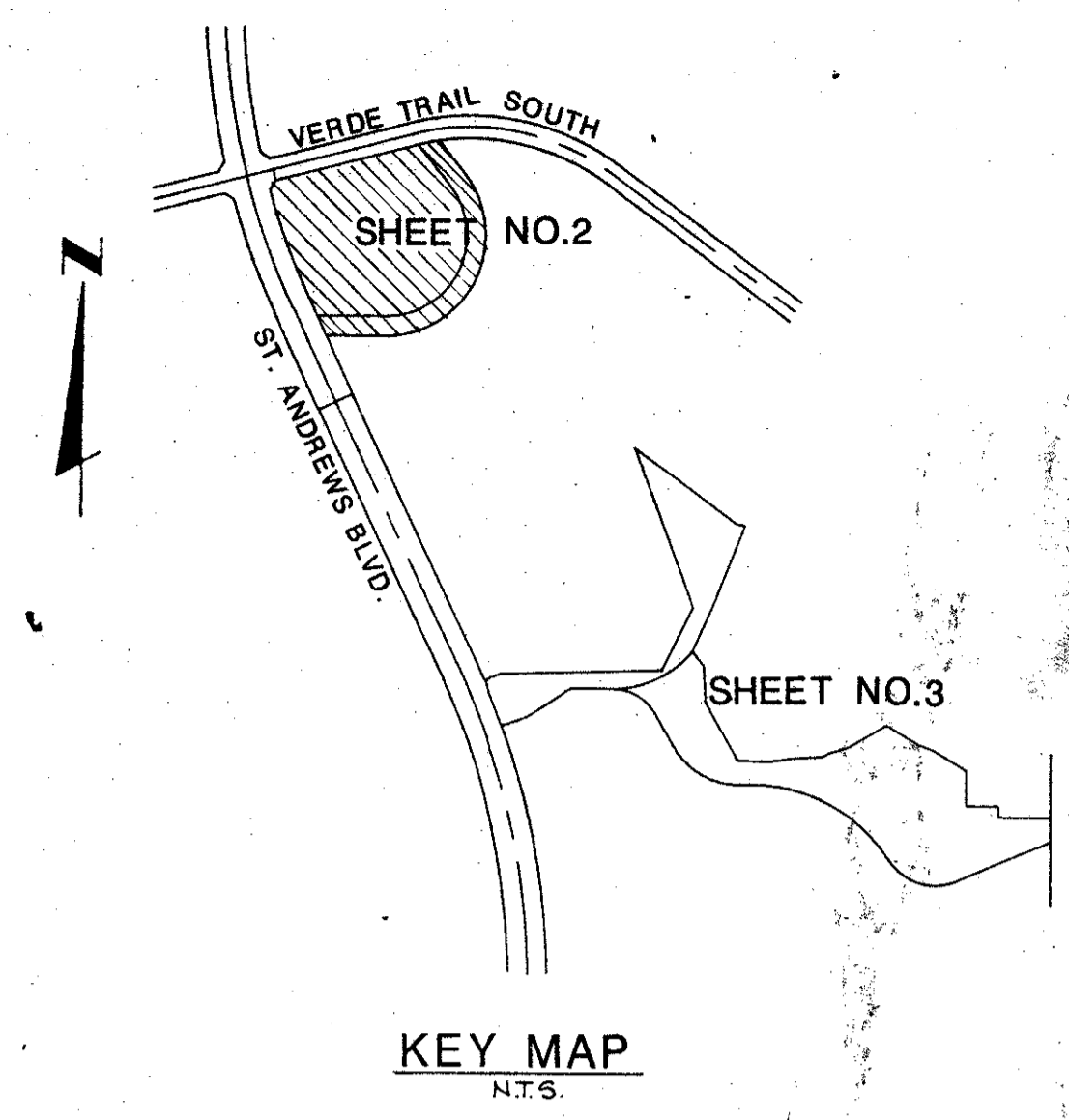
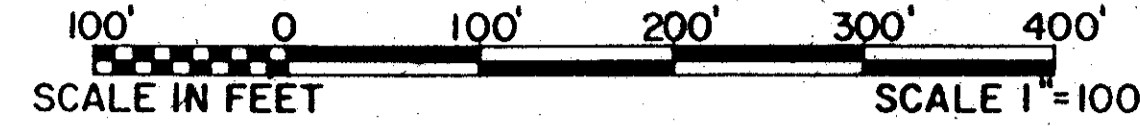


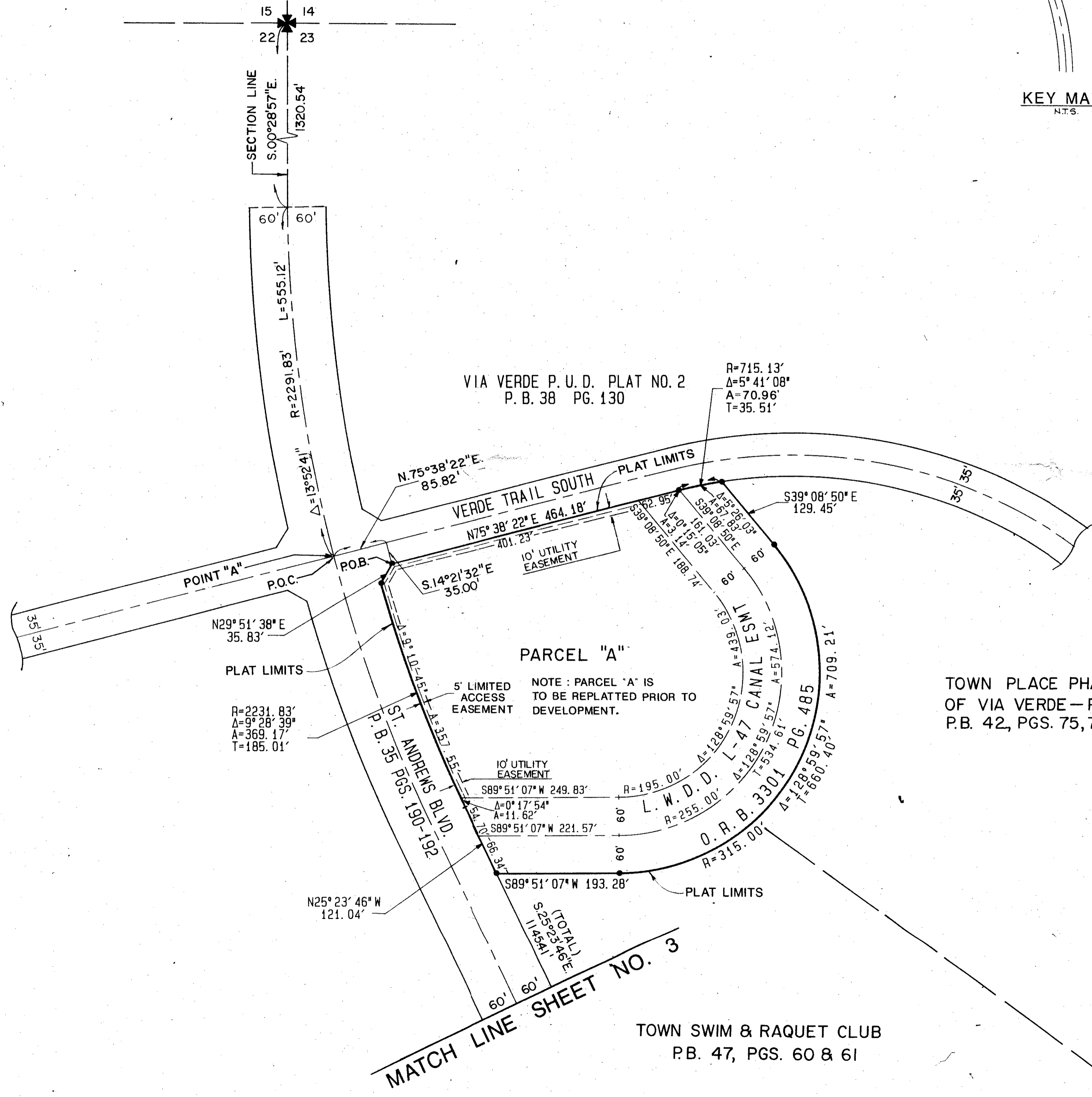
PLAT NO. THREE - VIA VERDE P.U.D.
IN PART OF SECTION 23, TOWNSHIP 47 SOUTH, RANGE 42 EAST
PALM BEACH COUNTY, FLORIDA
IN THREE SHEETS SHEET NO. 2

GEE & JENSON
ENGINEERS - ARCHITECTS - PLANNERS, INC.
WEST PALM BEACH, FLORIDA
JULY 1987



STATE OF FLORIDA
COUNTY OF PALM BEACH
This plat was filed for
record at _____ M, this _____ day
of _____ 1988, and duly
recorded in Plat Book No. _____
on Pages _____ thru _____.

JOHN B. DUNKLE
Clerk Circuit Court
By: _____ D.C.



NOTE
● - DENOTES SET P.R.M. NO. 2720 (FOUND)

Handwritten notes: 'The Under #3', 'RS 81-171', 'T.A.Z. 690', 'PUB'.

| | |
|----------|-----|
| COMPUTED | PAC |
| DRAWN | PAC |
| CHECKED | JHD |
| COMMENTS | |
| APPROVED | |
| REVISION | |

Handwritten notes: '6/93', 'VIA VERDE PUD PAT 3 0323-001'